

Franklin REC Alternative Energy Fund

Alternative Energy Fund Authorization Form

Monthly Pledge \$ _____ (\$1.00 increments only)

This amount will be automatically added to your monthly electric bill. You may enter or leave the program at any time.

One-time Contribution \$ _____

Checks should be made out to Franklin REC.

Name _____

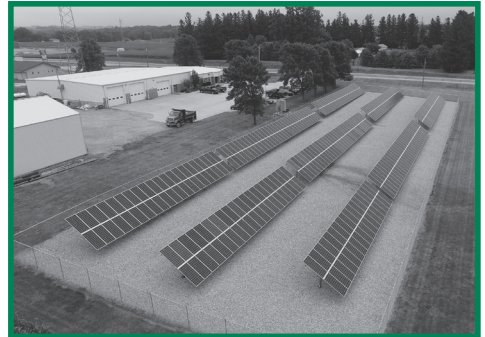
Address _____

City _____ State _____ Zip _____

Billing Account Number _____

Signature _____

Return to: Franklin REC, P.O. Box 437, Hampton, IA 50441



Franklin REC Alternative Fund Information

- **What is it?** A voluntary fund to assist in the purchase of wholesale alternative energy or “green” energy in Iowa.
- **Why does Franklin REC need this fund?** Iowa state law requires electric utilities to offer a voluntary alternative energy purchase program to people they serve. The cost to acquire this energy exceeds the cost to generate power from Corn Belt Power Cooperative’s other generation resources. This fund will be applied to the purchase of renewable energy.
- **Where will this energy be purchased from?** One source is the wind energy center in Hancock County. If the demand from consumers exceeds the output from the wind energy center, then Corn Belt Power, on behalf of Franklin REC, will make additional investments in renewable energy in Iowa.
- **Why would I want to participate?** Some people are very supportive of the environment and want to protect it.
- **When did the fund start?** It started Jan. 1, 2004.
- **How will I know that I am receiving green power?** We cannot guarantee that you will receive power generated with renewable resources.
- **How do I participate?** The program is voluntary. Complete the enrollment form on the reverse side and return it to the office or stop in and fill out an enrollment form. Contributions must be in \$1.00 increments. You may enter or leave the contribution program at any time.